

23 February 2023

MIT ADVISORY



MIT HOLIDAY ADVISORY

Dear Valued Customers,

Please be advised of our port operations schedule on:

Friday, February 24, 2023 - Special Non-Working Holiday

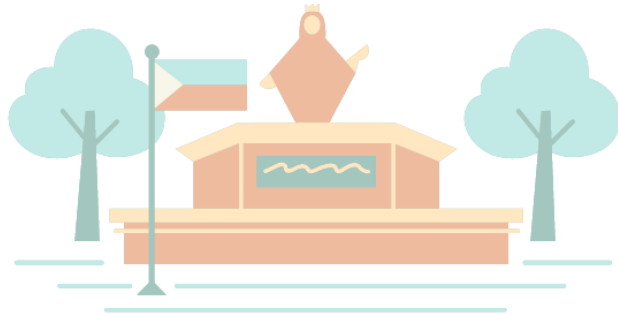
Vessel, Yard, and Gate Operations: **24 hours**

ACTS Online Payment: **24 hours**

For BOC manning and schedule, kindly coordinate with BOC-MICP directly.

Please share with your team for everyone's proper guidance.

Thank you,
MIT Management



For questions and concerns, please contact customercare@ictsi.com.

Download the ICTSI App now!



IOS



Android

Copyright @ ICTSI 2015. All Rights Reserved.

To stop receiving MICT Advisories click [Unsubscribe](#).

Manila International Container Terminal

MICT South Access Road, Port of Manila, 1012 Manila, Philippines

+632 245-4101 | www.mict.com.ph | www.ictsi.com

Please do not reply directly to this email. It was sent from an unattended mailbox. For correspondence and inquiries, please send to customercare@ictsi.com.

Provisions under Terminal Services-Standard Trading Conditions-Manila International Container Terminal (MICT) are referred to in so far as applicable.

Copy of the Standard Trading Conditions can be viewed at <https://mict.com.ph/terms-conditions> or available upon request.